

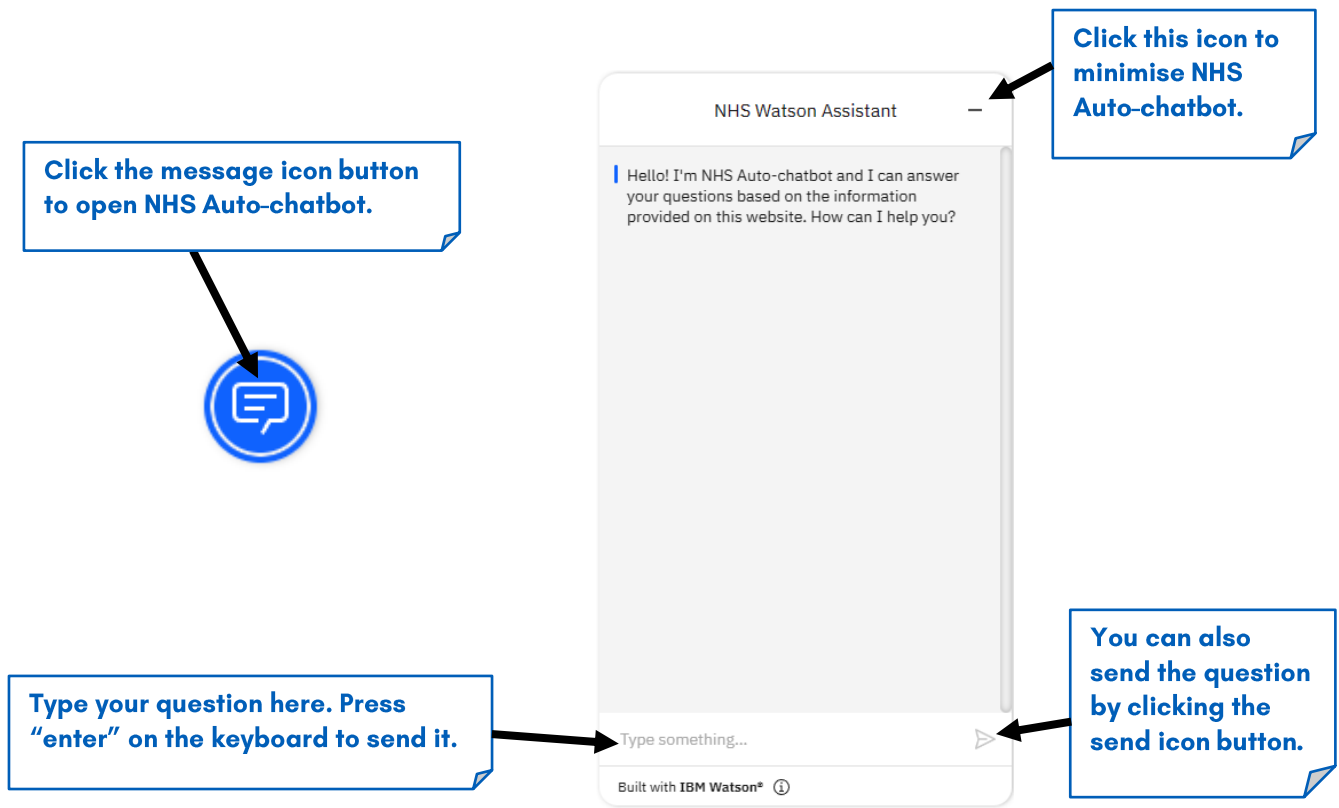


User Manual

COMP0016 2022/2023 Team 12

NHS Auto-chatbot

Using NHS Auto-chatbot



Users can become familiar with NHS Auto-chatbot's chat interface through practice because it is user-friendly and easily accessible. These are three simple steps to use NHS Auto-chatbot:

1. After you click the message icon button, NHS Auto-chatbot sends you a greeting message.
2. You can start type your question at the text bar. To send it, you can either press "enter" on the keyboard or click the send icon button.
3. NHS Auto-chatbot will provide you an appropriate answer after receiving the question.

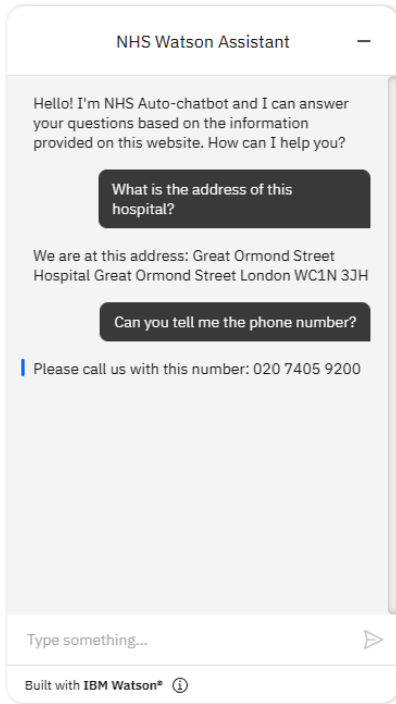
Note

NHS Auto-chatbot can only answer your questions based on the information from your website. For instance, if you ask a general question like "Where does a tiger live?", it will not provide you with an appropriate answer, because there is no information about that on the website. You can ask specific questions like "What is the address of the hospital?", "What is aspirin?", "How to eat smart and healthy", "Tell me the phone number of this hospital", because that information is on the website.

Have a pleasant time using NHS Auto-chatbot!

Showcase

NHS Auto-chatbot can provide answers to important questions:



NHS Auto-chatbot can provide answers to specific and general questions:

